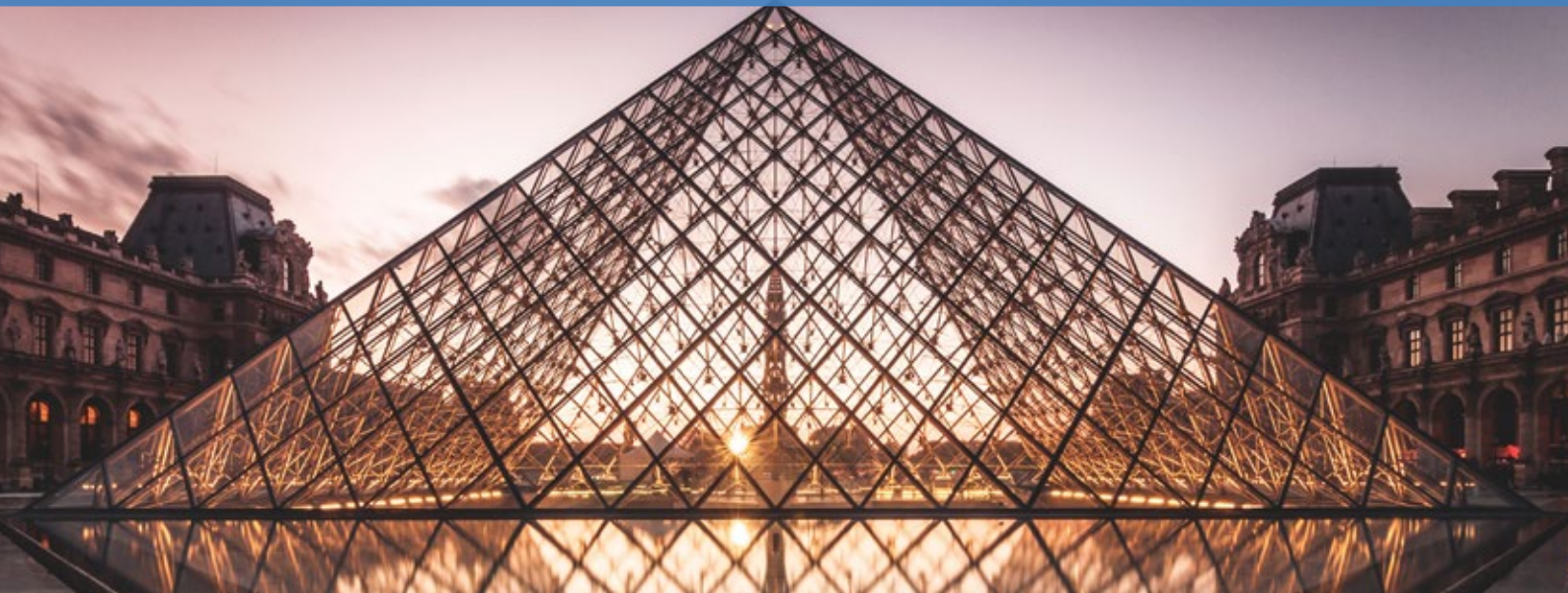
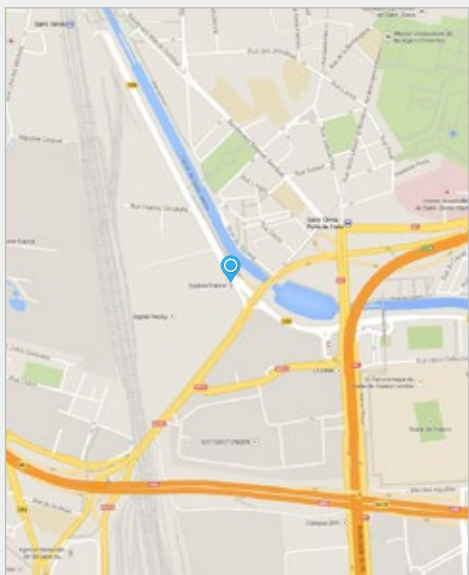


Digital Realty Trust  
1st Floor, 114 Rue Ambroise Croizat, 93200 St Denis, Paris



Global Cloud Xchange's co-location centre is located strategically in Saint Denis in close proximity to the important business centers of Paris. Our state-of-the-art centre offers an excellent co-location facility to the enterprises and businesses in Paris.

## SPECIFICATIONS



### Space

- Total raised floor area: 817 m<sup>2</sup>
- Floor loading capacity: 500 kg/m<sup>2</sup>
- Slab to ceiling height: 3 m

### Power

- 220V, 16A dual feed AC power per rack
- -48V, 20A dual feed DC power per rack
- Powerdensity: 180 W/ft<sup>2</sup>
- Redundant UPS and diesel generator

### Security

- 24x7 security guards
- CCTV cameras
- Access control system

### Environment

- Temperature 22 ± 4°C
- Humidity 50% ± 10%
- Temperature sensors & smoke / fire alarms
- VESDA smoke detection & ionization
- FM200 fire suppression system
- CO<sub>2</sub> fire extinguishers

### Connectivity

- SDH / SONET and Ethernet bandwidth
- Diverse building cable entry
- Interconnect circuit patching
- Networks interconnects : Global Cloud Xchange, LDCOM (Neuf), Telcote, Colt and others

## OUR OTHER CO-LOCATION CENTRES INCLUDE

- Hong Kong – China
- New York – USA
- London – UK
- Taipei – Taiwan

Co-location can also be offered as a custom solution at Plerin – France, Skewjack – UK, Northport & Island Park – USA, Tokyo & Wada – Japan and Singapore



CO-LOCATION SERVICE PLANS

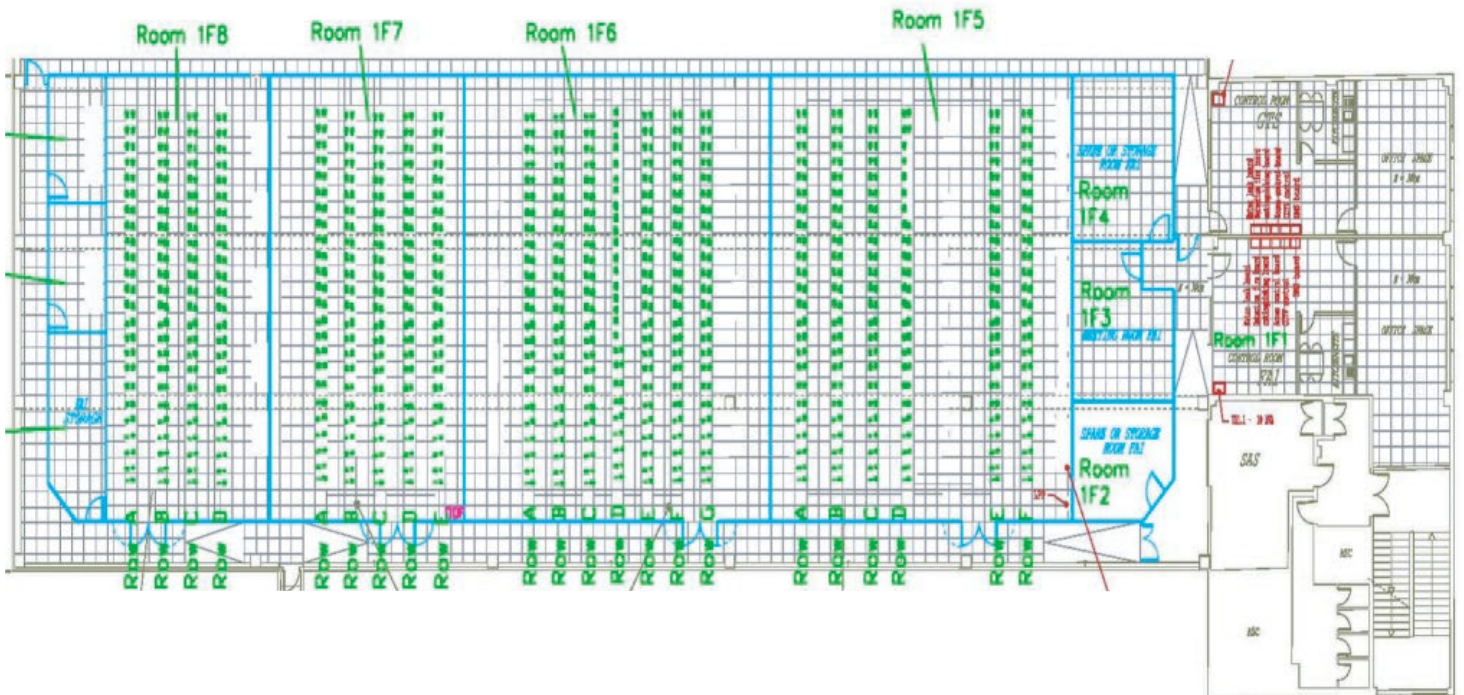
Features	Safe Rack	Safe Cabinet
Rack specifications	Single 19" open rack (42U)	Single 19" locking cabinet (42U)
Rack / Cabinet dimensions (WxDxH)	600mm x 800mm x 2200mm or 600mm x 600mm x 2200mm	
Standard power (Dual feed)	AC: 230V 16A DC: -48V 20A	
Power sockets	2 x 6 sockets	
Additional power	Optional	
Incoming PSTN line	Optional	
Safe Hands services	Optional	

Additional power, non-standard size racks / cabinets and private cages can be delivered as a custom solution.

SAFE HANDS SERVICES

Service Feature	Business Hours	Non Business Hours
Service period	8am – 5pm local time Mon – Fri	5pm – 8am local time Mon – Fri Weekends & holidays
Minimum call out time	1 hour for each call, additional in the slab of 1 hour	2 hour for each call, additional in the slab of 1 hour
Response time	2 hours	4 hours
Monthly pack per month per hosting centre site	5 hours & 10 hours	
Additional hours	Slab of 1 hour	
Month start date	1st day of each calendar month	
Unutilised hours in a month	Lapsed, no carry forward	

FLOOR PLAN



For further details, please email us at [query@globalcloudxchange.com](mailto:query@globalcloudxchange.com)