

Bandwidth Scalability up to 10Gbps with Bandwidth Upgrades Available in Real-time on Demand

EtherLAN

KEY HIGHLIGHTS

- › *Connectivity in more than 90 countries around the world including comprehensive coverage across the Emerging Markets Corridor.*
- › *Highly Resilient and Secure Ethernet service built on world's largest privately owned self-healing global MPLS/IP network*
- › *MEF CE 2.0 certification offering predictability of service functionality and performance*
- › *Fully-meshed any-to-any connectivity with Six Class of Service (CoS) model offering performance guarantees*
- › *Bandwidth scalability up to 10Gbps with bandwidth upgrades available in real-time on demand*
- › *Seamless integration with Global Cloud Xchange Cloud computing platform*
- › *Flat rate and Usage-Based Billing options*
- › *Comprehensive managed Service – NID-based service monitoring, 24x7 helpdesk and Online portal for real-time performance management and reporting*

CONNECTING TO TOMORROW'S CLOUDS AND APPLICATIONS WITH FLEXIBLE GLOBAL ETHERNET

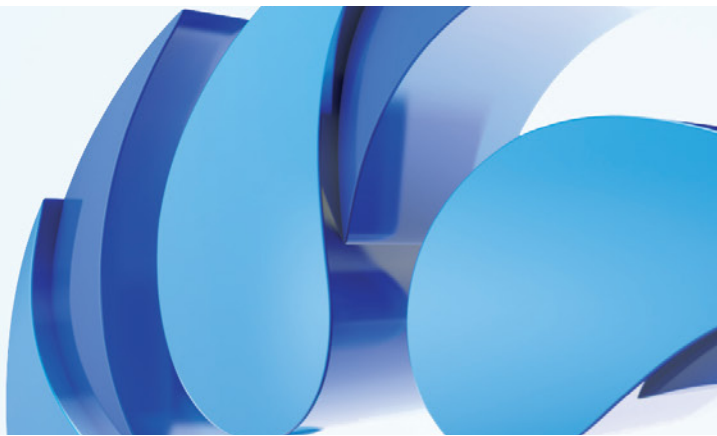
In a world of emerging markets, new trading patterns, Cloud computing and software defined networking, straightforward, ubiquitous Ethernet connectivity offers performance, flexibility and cost-efficiencies like no other network technology.

Not only is Ethernet relatively simple to manage enabling enterprises to rationalize their LAN - WAN environments, but it is the perfect mechanism to connect to high performance Cloud infrastructures, application workloads and Cloud content. And because it is delivered as "layer 2" connectivity, network boundaries are simplified enabling rapid and flexible service provisioning.

EtherLAN from Global Cloud Xchange is a MEF CE 2.0 certified fully-meshed service delivered across GCX's privately-owned and operated global fiber-optic network, presented as flexible, any-to-any Global Ethernet. The service is available in 3 variants offering different levels of protection and performance: EtherLAN Plus offers traffic prioritization with 6 Classes of Service available to support voice, video and data, while EtherLAN Prime offers traffic prioritization as well as resilience on local access circuits. EtherLAN Lite offers best-effort performance and fewer technical and service features at a more cost-effective price point meaning there is an option to meet every requirement.

Bandwidth is available on-demand in real-time from 1Mbps up to 10Gbps, and billing can be provided as either flat-rate or usage-based. With a managed service covering the delivery, installation and maintenance of NIDs as well as end-to-end performance monitoring with visibility available through our online portal, EtherLAN provides the ultimate cocktail of control, flexibility, performance and connectivity at an affordable price.

And what's more, the direct integration of Global Cloud Xchange's cutting edge Cloud platforms with EtherLAN puts the power of high performance on-demand Cloud computing just a mouse-click away.



WHY GLOBAL CLOUD XCHANGE?

GCX is different. Its state-of-the-art global fiber network connects most of the world's major business centers and Internet Exchange Points as well as reaching deep into emerging markets such as Asia and the Middle East. Yet unlike other global network operators GCX owns its own network down to the fiber under the oceans, meaning it remains in sole total control of the infrastructure; control to make changes and upgrades, add new cables and PoPs, even upgrade core capacity throughout the entire subsea cable system.

So whether you are a manufacturer deploying Cloud-based applications to a new market in a matter of minutes courtesy of Global Cloud Xchange's integrated Cloud and EtherLAN platform, or a law firm running converged voice, video and data services between offices in Asia, Europe and North America, EtherLAN from Global Cloud Xchange gives you security, simplicity, flexibility and performance regardless of distance or geography.

SOLUTION FEATURES

- > **Topology:** Any-to-any Ethernet over MPLS (RFC 4448) with seamless extension into Metro Ethernet & EoSDH based networks
- > **Standards Compliance:** MEF CE 2.0 certified service
- > **Variants:**
 - **EtherLAN Prime:** Traffic prioritization & access resiliency
 - **EtherLAN Plus:** Traffic prioritization
 - **EtherLAN Lite:** Best-effort throughout
- > **Class of Service:** 6 Classes of Services supporting voice, multimedia and data
- > **Scalability:** Bandwidth support from 1Mbps up to 10 Gbps
- > **Interfaces Supported:**
 - **Copper:** 10/100/100 Base T/Tx (RJ-45 Connector)
 - **Fiber:** 1000 Base LX/SX/ 10G
- > **MTU:** Jumbo Frame support (up to 9000 Bytes)
- > **VLAN & QoS:** 802.1q VLAN transparent. Layer 2 (802.1p) with Q-in-Q tagging for added granularity and control

SERVICE FEATURES

- > **Managed Ethernet Service:**
 - Delivery, installation and maintenance of Network Interface Devices ("NIDs")
 - End-to-end fault-management and performance monitoring
 - Online portal for network performance visibility, reporting and customer service
- > **Agility:** Faster delivery timelines through robust process architecture and best in class delivery
- > **Flexibility:** Bandwidth upgrades on-demand in real time, usage as well as flat-rate billing
- > **Service Continuity:** Bandwidth upgrades can be delivered without service disruption
- > **Service Assurance:** SLAs covering site Availability, Round Trip Delay (RTD), Packet Loss and Jitter
- > **Cloud:** Seamless integration and interoperability with Global Cloud Xchange Cloud computing platforms throughout the world

SERVICE COVERAGE

